

### SPARE PARTS

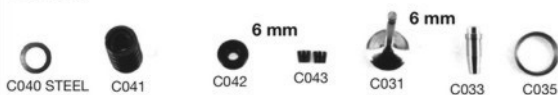


### EX



C040 FIBER

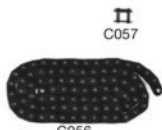
### IN



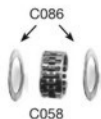
CODE	PRICE / DESCRIPTION
C001	
C002	
C003	
C004	
C005	
C006	
C007	
C008	
C009	
C010	
C011	
C012	
C013	
C014	
C015	
C016	
C017	
C018	
C019	
C020	
C021	
C022	
C023	
C024	
C025	
C026	
C027	
C028	
C029	
C030	
C031	
C032	
C033	
C034	
C035	
C036	
C037	
C038	
C039	
C040	F S
C041	
C042	
C043	
C044	

## SPARE PARTS

CODE	PRICE / DESCRIPTION
C050 SLP	
C051	
C052	
C053	
C054	
C055	
C055 SP	
C056	
C057	
C058	
C059	
C060	
C061	
C062	
C063	
C064	
C065	
C066	
C067	
C068	
C069	
C070	
C071	
C072	
C073	
C074	
C075	
C076	
C077	
C078	
C079	
C080	
C081	
C082	
C083	
C084	
C085	
C086	



C057



C086

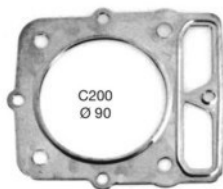






**SPARE PARTS**

CODE	PRICE / DESCRIPTION
C200	
C201	
C202 STD	
C202 SLP	
C203	
C204	
C205	
C206	
C207	
C208	
C209	
C210	
C211	
C212	
C213	
C214	
C215	
C216	
C217	



C200  
Ø 90

**SHORT  
STROKE**



C201  
Ø 90



C202

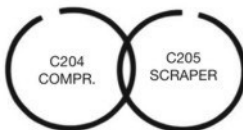


C206

**SHORT STROKE**



C203



C204  
COMPR.

C205  
SCRAPER

**SPARE PARTS**

**ROCKER ARM - REPAIR SET**

**C 222 compl. set**



C207



C208



C209



C210



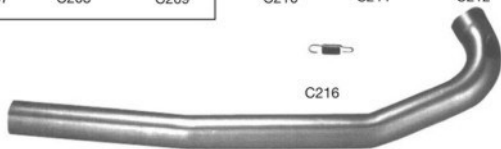
C211



C212



C216



C217



**5 Lt.**  
**Synthetic oil developed  
for methanol specially for  
speedway engines**